



# TALL TUBULAR BATTERY

(100Ah to 280Ah)

## ADVANCED TUBULAR



**NO INTERNAL PACKING**



**LOW MAINTENANCE**



**FASTER RECHARGE**



**SUPERIOR VOLTAGE**



**PATENTED CONTAINER**  
287292, 287295



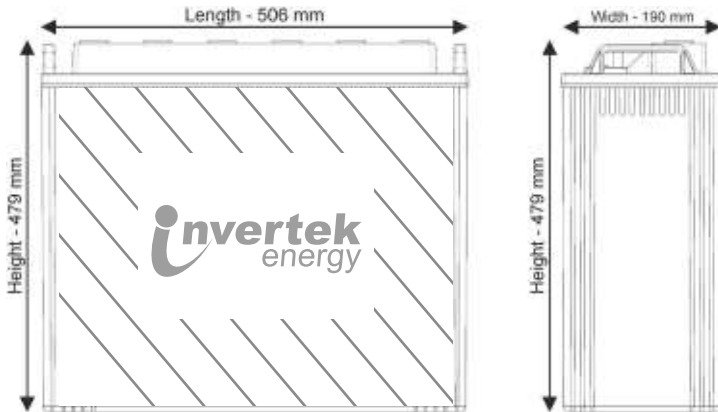
**PARTIAL STATE OF CHARGE CONDITION**



**LONGER LIFE**



**INCREASED BACK-UP**



Range available: 100Ah to 280Ah

### Features Benefits

Long Cycles (1100@80% DOD,5000@20% DOD)	Long design life
Topping up frequency: 8 to10 months	Very low maintenance
High temperature performance	Can handle extreme weather conditions
High charge acceptance	Rugged Performance
Self discharge rate - 3 % per month @ STC	Longer life without charging

### TECHNICAL DATA

Type of Battery	Nominal Voltage	Capacity @C20 at 27°C	Gross Battery Weight +/- 3% (Kg)	Overall Dimension			Terminal Type
				Length +/- 3mm	Width +/- 3mm	Height upto float top +/- 3mm	
	(V)	(Ah)	(mm)	(mm)	(mm)		
IE 100	12	100	50	506	190	479	L
IE 150	12	150	57	506	190	479	L
IE 200	12	200	65	506	190	479	L
IE 220	12	220	67	506	190	479	L
IE 240	12	240	70	506	190	479	L
IE 260	12	260	72	506	190	479	L
IE 280	12	280	74	506	190	479	L

Technical Specifications Are Subject To Change Without Prior Notice.

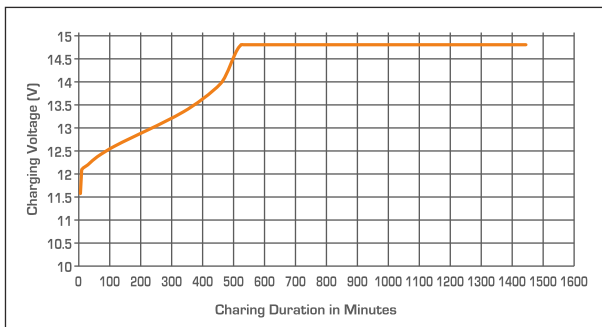
Conditions Apply\*

### Electrical Parameters & Charging Profile

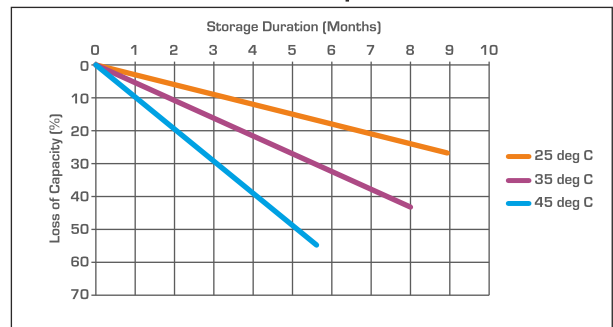
Battery Specified Capacity Test @ 27°C					
MODEL	C20 @ 10.5V	C10 @ 10.5V	C5 @ 10.5V	C3 @ 10.5V	C1 @ 10.5V
IE 100 (12 V 120AH @ C20)	100	90	92	88	60
IE 150 (12 V 150AH @ C20)	150	135	112	97	68
IE 200 (12 V 200AH @ C20)	200	180	150	129	90
IE 220 (12 V 220AH @ C20)	220	200	165	143	100
IE 240 (12 V 240AH @ C20)	240	211	176	151	106
IE 260 (12 V 260AH @ C20)	260	220	200	175	140
IE 280 (12 V 280AH @ C20)	280	236	210	185	152
Ah & Wh Efficiency					
Ah Efficiency	>90%		Wh Efficiency	>80%	

- **Poly Components Material:** Polypropylene Co polymer
- **Watering system :** Individual to every cell in Monobloc
- **Color :** Blue
- **Testing Parameters :** IS 13369:1992 & IEC 61427

**Charging Profile**



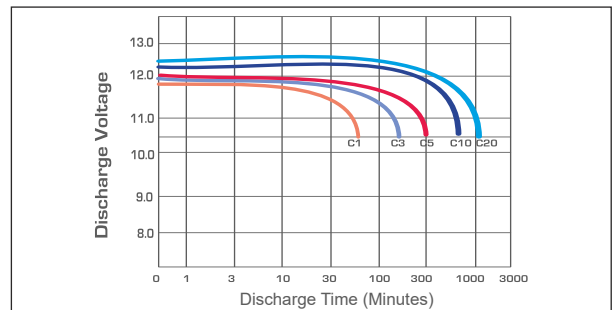
**Self Discharge Characteristics @ Different Temperature**



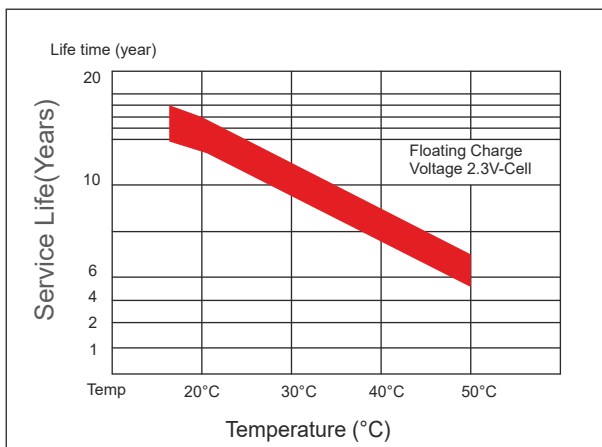
**State of Charge Measure of Open-circuit Voltage @ 27°C**

State of Charge	Specific Gravity	Voltage
100%	1.240±10	12.55V-12.70V
75%	1.125±10	≤12.4V
50%	1.200±10	≤12.1V
25%	1.175±10	≤12.0V
0%	1.150±10	11.8V

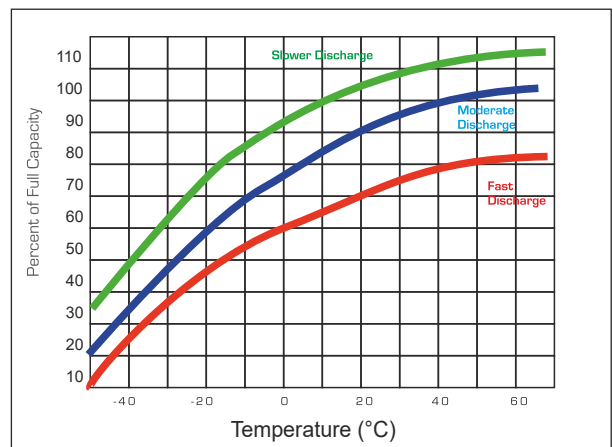
**Discharging Characteristics at various rates @ 27°C**



**Service (Float) Life and Temperature**



**Expected Capacity vs Temperature**



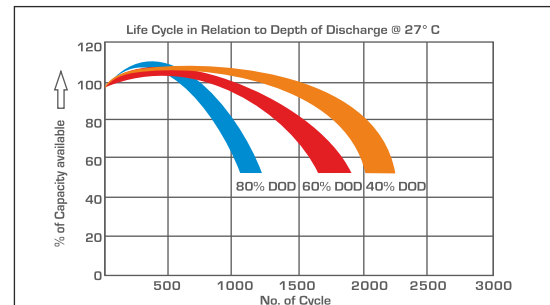
Invertex Battery Manufacturing Certified by



### Specific Gravity & Self Discharge w.r.t. Temperature

	Add	Subtract
CHARGING TEMPERATURE COMPENSATION	0.005 volt per cell for every 1°C below 25°C	0.005 volt per cell for every 1°C above 25°C or
	0.0028 volt per cell for every 1°F below 77°F	0.0028 volt per cell for every 1°F above 77°F
OPERATIONAL DATA	Operating Temperature	Self Discharge
	-4°F to 131°F (-20°C to +55°C) At temperatures below 32°F (0°C) maintain a state of charge greater than 60%.	As per discharge Graph

### Expected Life



### Charging Instructions

Charger Voltage Settings (at 77° F / 25°C)			
System Voltage	12V	24V	48V
Maximum Charge Current	0.2C10		
Maximum Absorption Phase Time (hours)	4		
Absorption Voltage	14.4	28.8	57.6
Float Voltage	13.6	27.2	54.4
Equalization Voltage	16	32	64
Do not install or charge batteries in a sealer or non-ventilated compartment. Constant under or overcharging will damage the battery and shorten its life as with any battery.			
Periodic Charge	Provide a periodic freshening charge to maintain a SOC greater than the threshold of 70%		

### Terminal Configuration

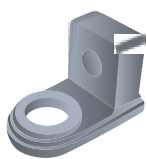
**Terminal Type** : L  
**Terminal Height** : 26.5 mm  
**Terminal Width** : 25.7 mm  
**Terminal Length** : 42 mm  
**Bolt Type** : M8

### Transport Vent Plug Type

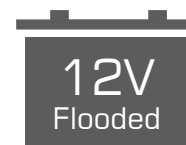
MF Locking

### Flot Type

Locking Flot indicator cum watering lid for each cell



## Recycle Responsibly



### INVERTEK ENERGY PVT. LTD.

#### Factory Address:

GF, Plot No. 445 Kh. No. 9/20,10/16, Laxmi Vihar, Najafgarh,  
Near DTC Bus Depot Dichaon Kalan, UER2 Expressway, West  
Delhi-110043 (INDIA)

[www.invertetekenergy.com](http://www.invertetekenergy.com), [info@invertetekenergy.com](mailto:info@invertetekenergy.com)

**Customer Care No. +91 93113 69797**

#### Dubai Office :-

A-109 Baniyas Tower Baniyas Square Deira- Dubai - 671536

Contact No. +971 58 857 5171

[www.invertetekenergy.com](http://www.invertetekenergy.com), [info@invertetekenergy.com](mailto:info@invertetekenergy.com)